



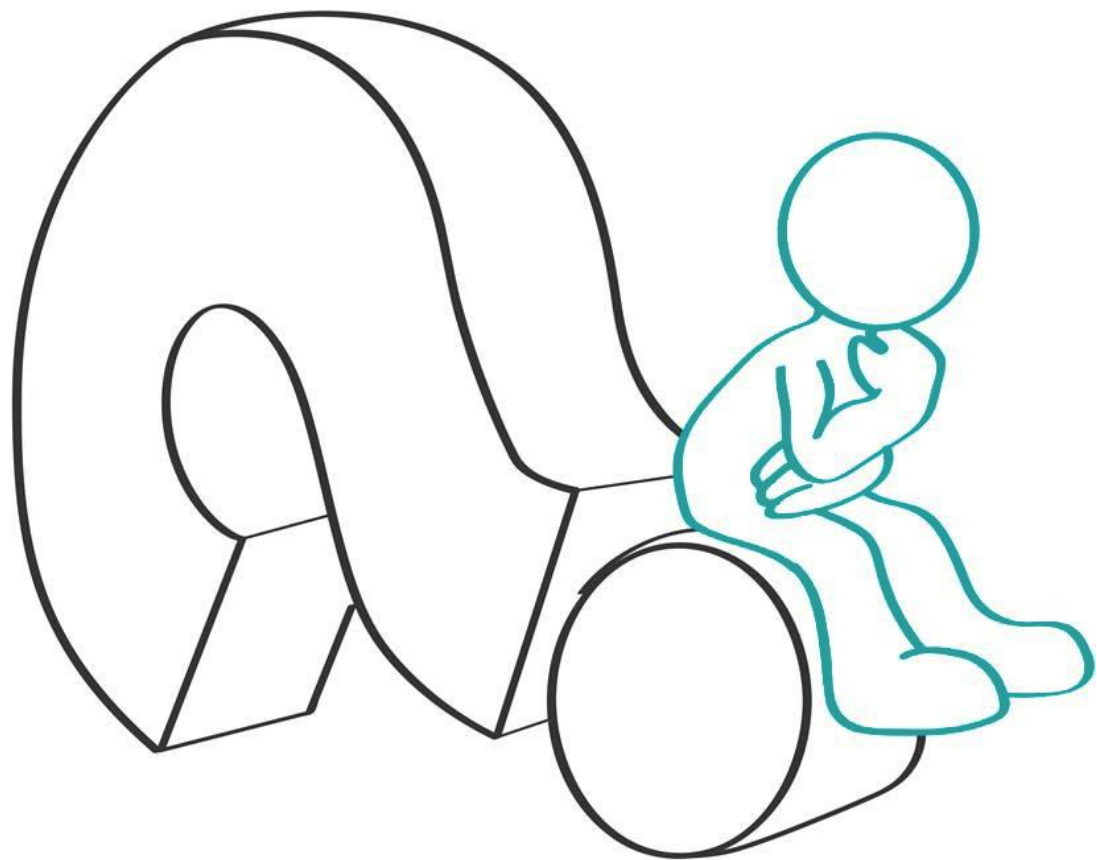
The Social Progress Index: A Tool for Measuring and Improving Social and Environmental Performance

World Confederation Mornese Past Pupils of the FMA



Introduction

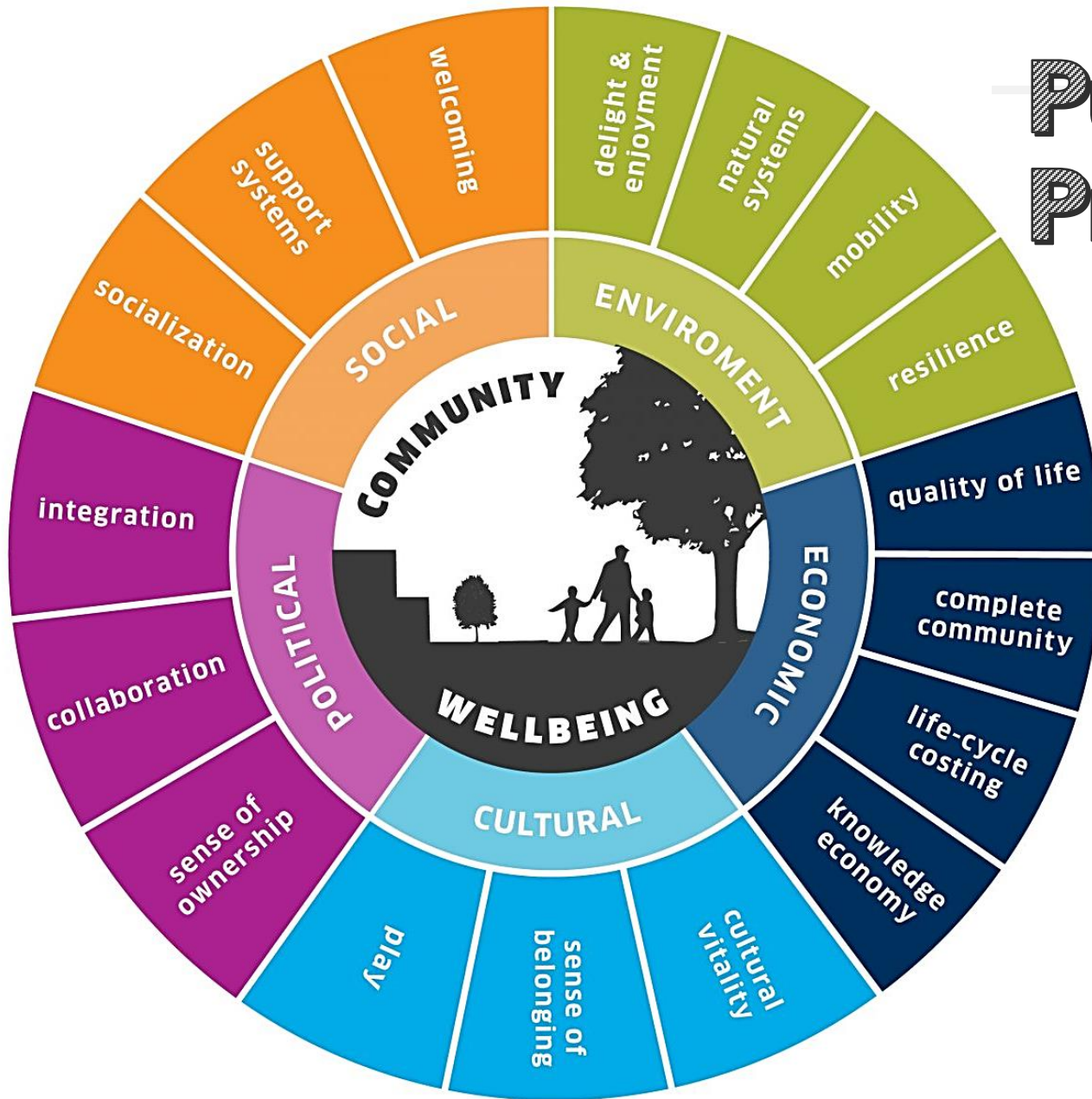
- Welcome to the presentation on the Social Progress Index (SPI).
- The SPI measures a country's progress based on social and environmental performance.
- Developed by the Social Progress Imperative, a non-profit organization.
- Provides a comprehensive view beyond economic indicators like GDP



What is the Social Progress Index - SPI?



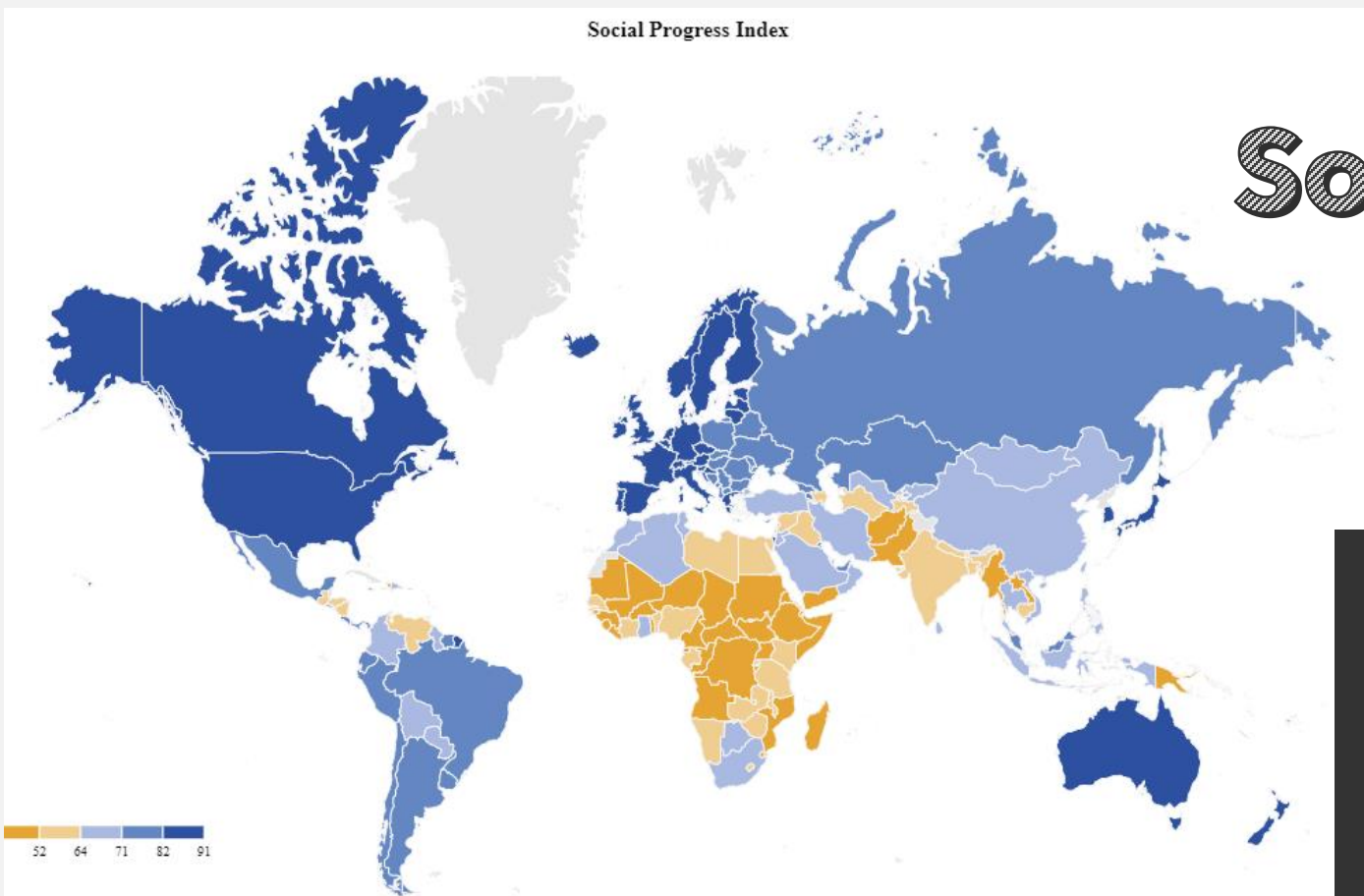
Purpose of the Social Progress Index



- Measures the overall progress of countries
- Considers indicators related to basic human needs, education, personal rights, and environmental quality



Importance of the Social Progress Index



- Allows countries to understand their social and environmental performance.
 - Helps identify areas needing improvement.
- Aids in prioritizing policies and investments for improving quality of life

Social progress around the world



Comparison

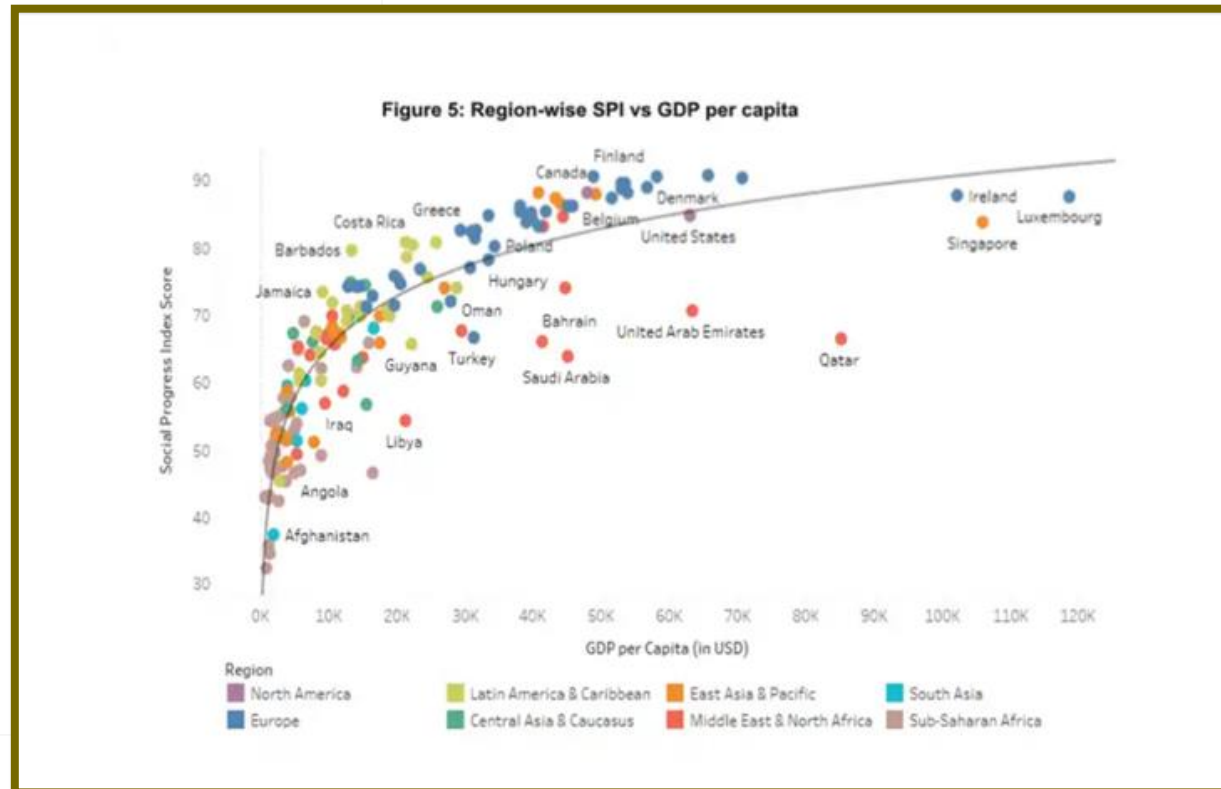
GDP versus SPI

GDP is about Economic Development

- GDP (Gross Domestic Product) is a measure of the total value of all goods and services produced within a country's borders during a specific period, typically a year. It is used as an indicator of a country's economic health and size.

SPI is about basic human needs, education, personal rights, and environmental quality

- The Social Progress Index is a tool that measures the overall progress of countries based on their social and environmental performance



Non-profit Organizations and the Social Progress Index



Non-profit organizations utilize the SPI to improve lives. Understand where benefits can have the most impact. Allocate funds and resources sustainably.

International Comparison and Collaboration

- The SPI facilitates international comparison.
- Benchmarking performance against other countries.
- Identifying best practices and areas for improvement.
- Promoting collaboration among countries facing similar challenges



Using data to influence policies and investments to better serve all of humanity

With more than 70 partners in 45 countries, the Social Progress Imperative provides governments, businesses, NGOs, journalists and researchers with the information needed to tackle global and local challenges, to improve the quality of life for all.

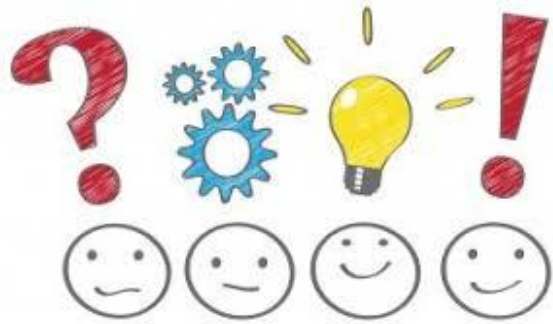


- The SPI provides a comprehensive view beyond economic measures.
- Offers a nuanced understanding of countries and their needs.
- Based on a rigorous methodology with a set of indicators.
- Ensures fair comparison and identification in all areas and shows ways for improvement.

Alignment with Sustainable Development Goals (SDGs)



- The SPI aligns with the SDGs adopted by the United Nations.
- Measures progress toward achieving the SDGs.
- Provides a framework for monitoring and reporting progress.

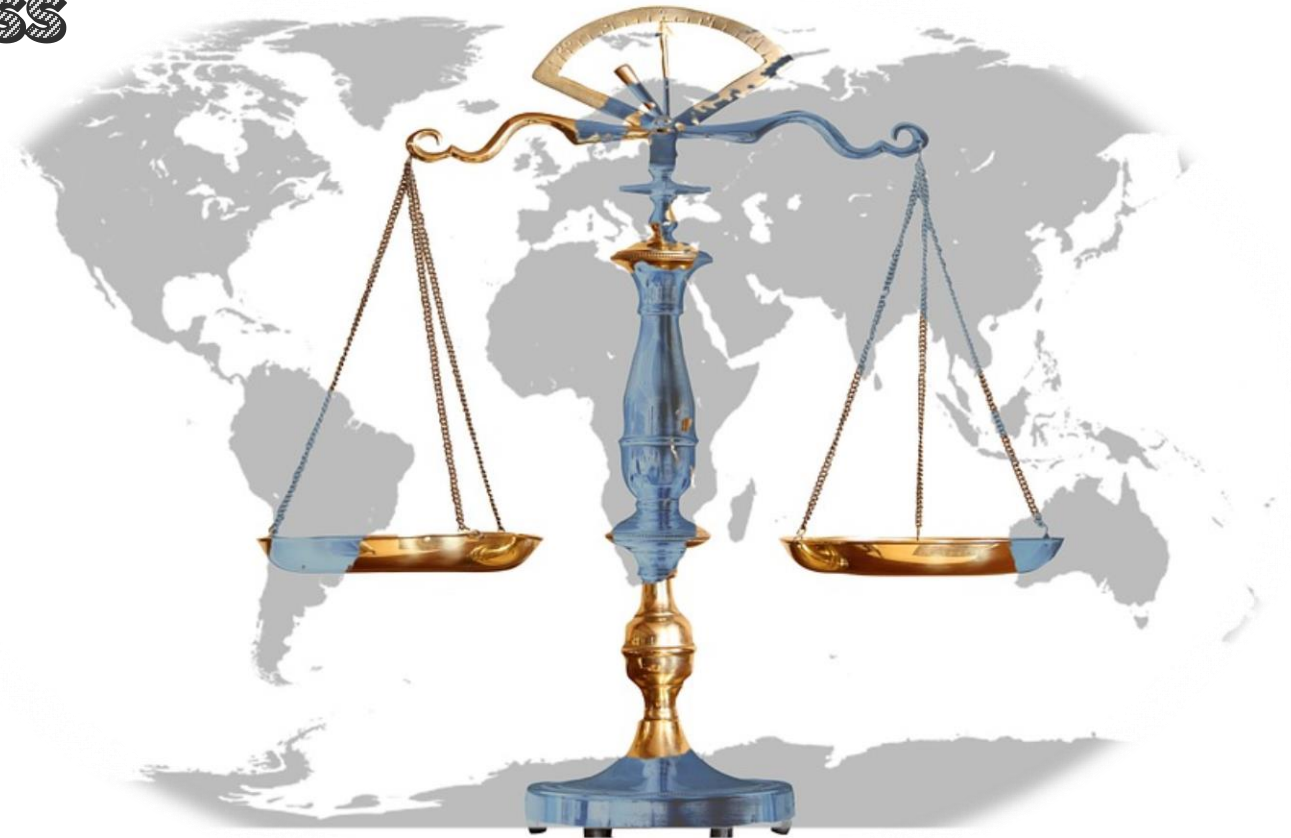


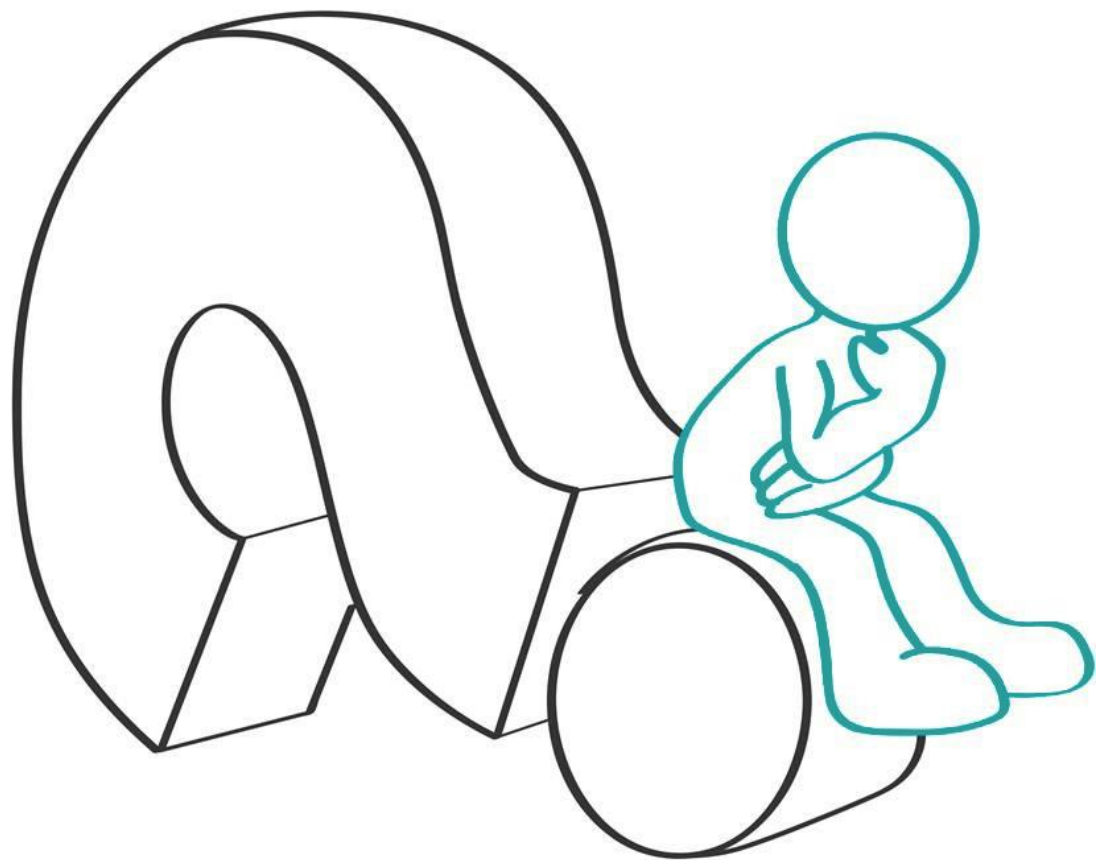
Why did the Confederation Choose the Social Progress Index - SPI



Why did the Confederation Choose the Social Progress Index?

For us, it is not an Economic index per se but rather an index that indicates and emphasizes the best way to calculate the quota more justly, considering the reality of all countries in their current context.





How is SPI calculated?



The Formula: How is the SPI calculated to assign the quota per country?

The formula is the proportion of the SPI multiplied by the Budget Euro (or Dollars) and divided by the Total SPI.

In Excel it looks like this: $= (E3 * 35000) / E\$85$

E3 = the SPI of the Country

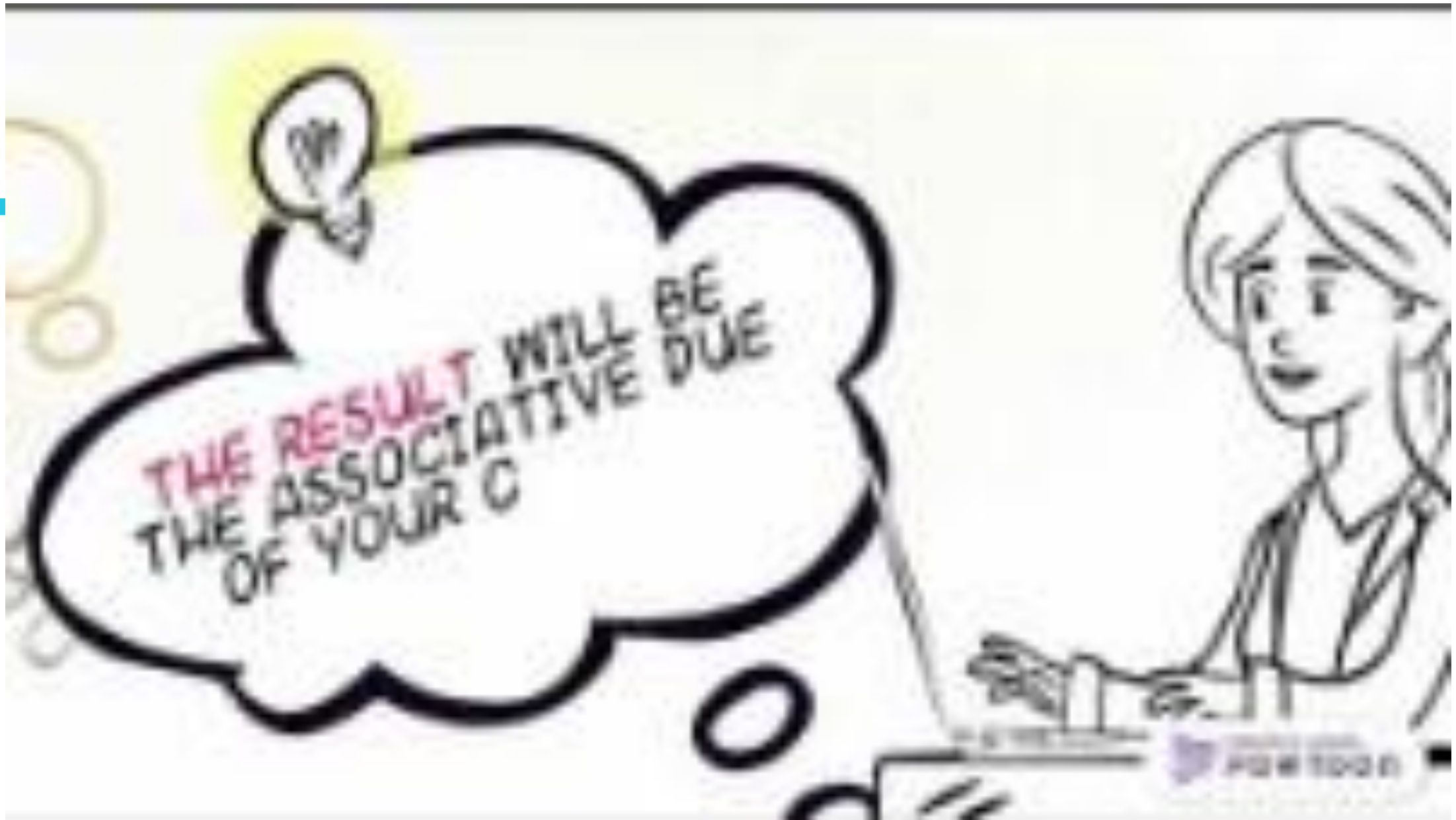
35000 = Approved Budget for the year

E\$85 = the Sum of the SPI of the Countries we are in. = 6088.9

For Example $(47.43 * 35000) / 6088.9 = 272.64$ Euros or 299.90 USD (The exchange rate for 2023 is \$1.10)

ABB	Country	Rank	SPI	Euros	USD
TTT	Country	150	47.43	272.64 €	299.90 USD
Total SPI		6088.9			





Benefits of Using the Social Progress Index for the Confederation's Quota



SPI

✖

PRESUPUESTO 2023

/

SUMA SPI PAISES
ASOCIADOS

:

CUOTA ASOCIATIVA



- It responds to some needs; countries with few resources live with concrete solidarity projects.
- It guarantees that the efforts are adjusted to the needs of the Federations.
- Allows you to identify specific areas for improvement at all levels
- Contribute to the global effort for a more just and sustainable world.
- The most important thing is that we show solidarity among ourselves and see the fee as an opportunity to give our contribution, our grain of sand that will help sustain the Association.
- Ability to work in a network within the territory to promote projects and initiatives in line with the objectives of the Association in response to the challenges of the social context.

Benefits of Using the Social Progress Index for the Confederation's Quota



Conclusion

- The Social Progress Index supports the Confederation in making a meaningful impact and working towards a just and sustainable world.
- We are at your disposal for any information or suggestions...
- Thank you for your **COLLABORATION** so meaningful for all of us!





Thank You!

